

Kingshighway

Kingshighway is a priority corridor for improvements as part of the Move Rolla Transportation Plan completed in 2015 and it is part of the Transportation Development District (TDD) approved by voters in 2017. Improving Kingshighway will make travel easier and safer for both motorists and pedestrians. Other potential improvements include:

- Consolidating the number of driveways to create a more uniform and predictable location for turns.
- Identifying and marking pedestrian crossing locations to create safer locations to cross Kingshighway and cross streets.
- Regrading and repaving the corridor to provide a smoother ride.
- Adding and improving sidewalks on both sides of the road. One side might include a wider multi-use path.
- Updating or adding amenities such as landscaping.
- Potentially relocating utility lines or poles to create a more visually appealing corridor.

In May, the project team met with property owners along the corridor to learn about how each of the properties function and access Kingshighway. Improvement concepts show different ways to improve safety and traffic flow along Kingshighway. All options include upgraded sidewalks or a multi-use path. Below are renderings of aesthetic improvements.



Existing corridor.

Shows improvements with bikepath, relocated utilities.

STAY CONNECTED

To stay up to date with the latest program information or sign up for electronic newsletters, visit:

www.moverollatdd.com

If you have questions or concerns regarding the TDD Program and projects, please contact:

Steve Hargis, PE
City of Rolla Public Works Director
573-364-8659 or shargis@rollacity.org

Public Meeting Factsheet

July 2018



PROJECT LIMITS MAP



Today's public meeting is your opportunity learn about the current Move Rolla TDD projects and provide input on some of the improvement concepts.

Move Rolla TDD focuses on developing a transportation system to meet the needs of all people and promotes a safe, healthy and vibrant community for the next 20 years.

The Move Rolla Transportation Development District (TDD) Program is focused on implementing the projects identified in the Move Rolla Strategy (2015) and presented to voters in the Transportation Development District tax boundary that was approved by district voters in January 2017. The goals include:

- Develop a safe and convenient transportation environment
- Promote alternative mobility choices
- Develop a transportation system that promotes economic opportunities
- Creates a sense of place

Move Rolla TDD Projects	2018	2019	2020	2021	2022
Highway 72					
I-44 Pedestrian Bridge at University Drive					
Kingshighway					
Bishop Avenue (US 63)					
University Drive					
Public Meetings					

LEGEND

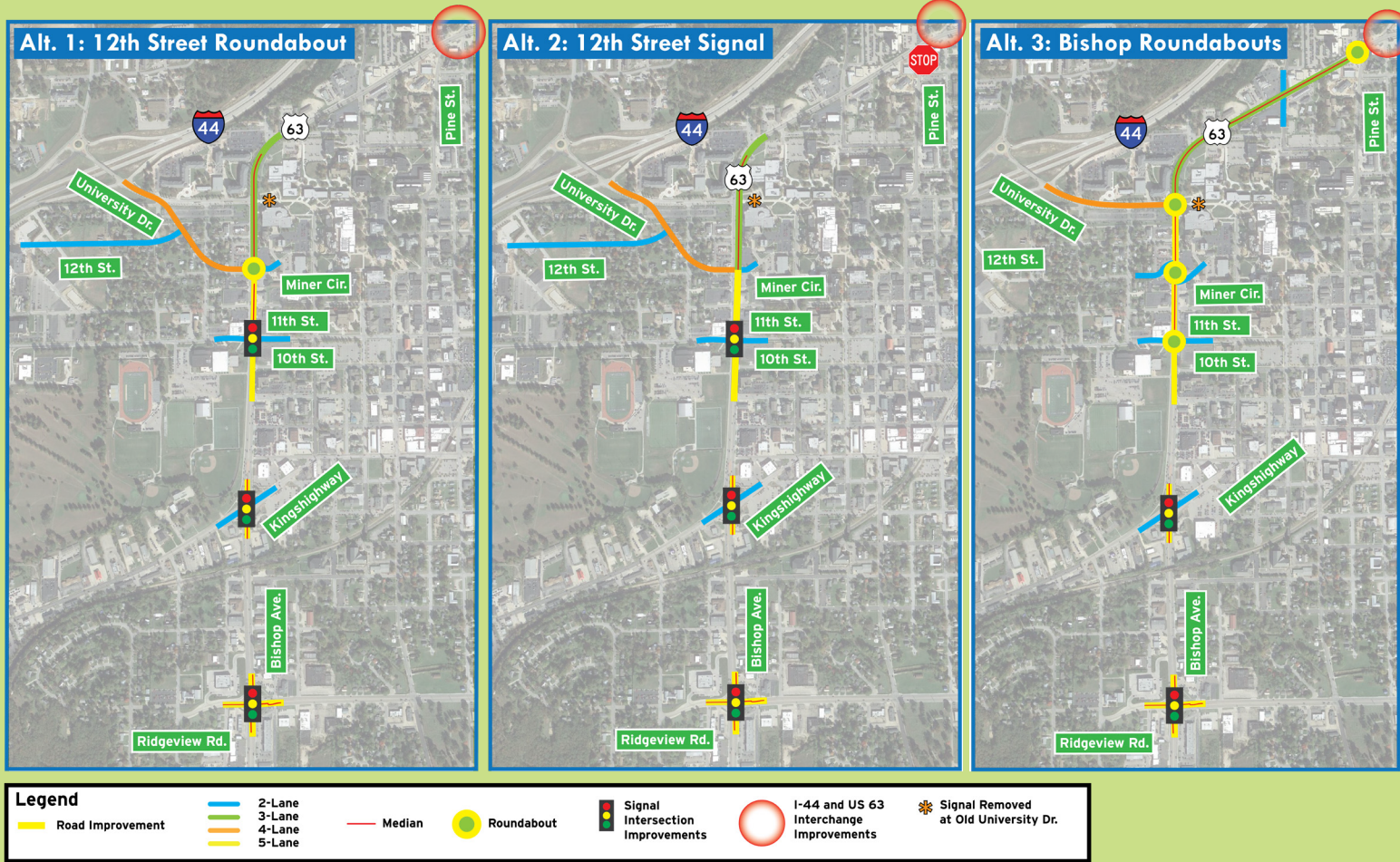
- Planning
- Design
- Construction
- Public Meeting

Bishop Avenue/US 63 Improvements

The Bishop Avenue/US 63 improvements include key intersection upgrades, pedestrian signal timing, signage and wayfinding, access management strategies as well as aesthetic improvements. The goal of the project will be to transform Bishop Avenue into a main street for the community.

The Improvements are intended to transform the corridor from a highway to a “Main Street” character, reduce visual clutter, and calm traffic by slowing vehicle speeds and reducing conflicts improving the pedestrian and bicycle environment. Complete street improvements may include a road diet through the reduction of a travel lane leaving one lane in each direction and a center turn lane with segments of median treatments where practical. The vacated lane will be repurposed to a separated bicycle lane and sidewalk. Other improvements will include improved crosswalks, access management improvements, gateways and aesthetic treatments. These improvements are consistent with the vision of the 2017 Missouri S&T Campus Master Plan.

Currently there are three concepts being considered and those are:



University Avenue/Pedestrian Bridge

The University Drive Pedestrian Bridge over I-44 has been identified as a priority project by the Move Rolla TDD program. The purpose of the new bridge crossing is to provide pedestrians a multi-use path that meets Americans with Disabilities Act (ADA) compliance standards, is safe and aesthetically pleasing.

The new 10-foot bicycle/pedestrian overpass will be located east of the I-44/University Drive (Missouri Route E) Interchange Bridge and will connect the sidewalk on University Drive to White Columns Drive north of the interchange connecting university housing.

The Missouri University of Science and Technology has a growing population and many students live north of I-44. A new pedestrian bridge would provide a safer route to school, either by foot or other modes such as bicycle.



Existing condition of pedestrian sidewalk at University Drive

Highway 72 Extension Project Update

Construction of the Highway 72 Extension is in full swing and still on schedule to be open to traffic by November 2018. By extending the four-lane highway between US 63 and I-44, it will provide an alternative route to relieve traffic on Kingshighway and US 63.



Your input is important, please visit the project board and share your opinion with project team members or fill out a comment form!